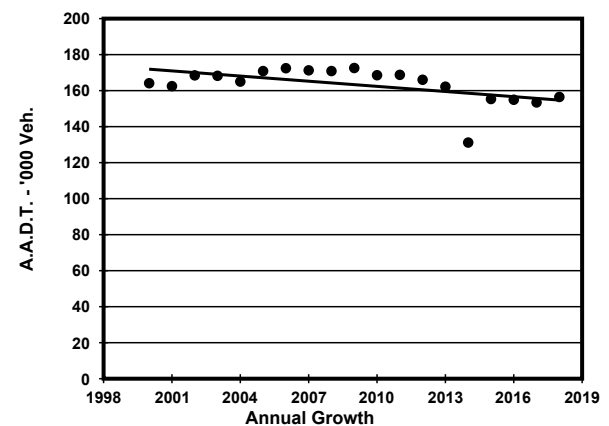
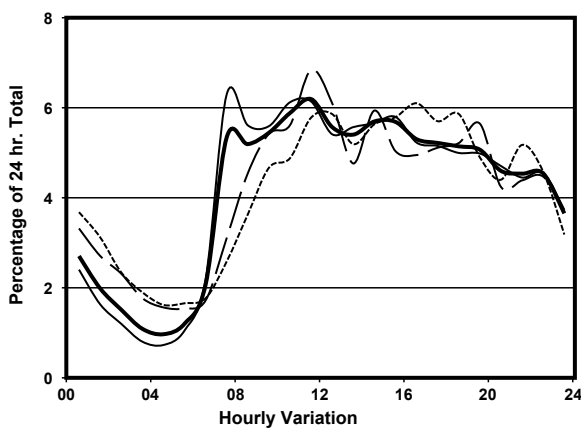
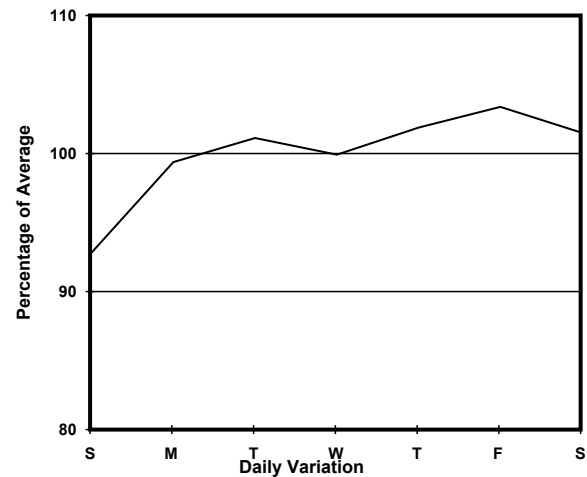
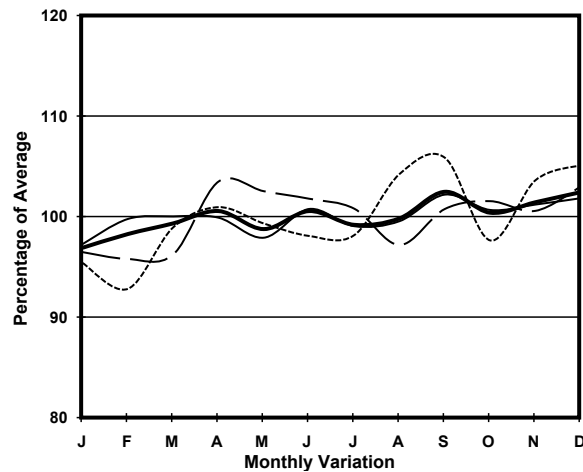


YEAR 2018
CORE STATION 1028
ROAD NETWORK MAJOR
ROAD TYPE URBAN TRUNK ROAD

LINK GLOUCESTER RD (from ARSENAL ST to CROSS
HARBOUR TUNNEL S. INT)

6.5m 15.8m 2.8m 19m 5.3m
E bound 5 lanes W bound 5 lanes

1. TRAFFIC FLOW VARIATION AND GROWTH



— All day - - - Mon.- Fri. Sat. - . - . - Sun.

2. TRAFFIC CHARACTERISTICS (BY DIRECTION)

Parameter	All - Day	Mon. - Fri.	Sat.	Sun.
EAST BOUND				
A.A.D.T.	73560	75690	68760	69700
R 12 / 24 - %	65	66.2	61.4	61.8
R 16 / 24 - %	84.5	86	80.9	80.2
AM Peak Hour	0900-1000	0700-0800	0900-1000	0900-1000
One-way flow at AM peak hour	3690	4390	2900	2900
T - % (AM)	-	-	-	-
PM Peak Hour	1600-1700	1600-1700	1800-1900	1800-1900
One-way flow at PM peak hour	4030	4070	3520	5060
T - % (PM)	-	-	-	-
Prop.of commercial vehicles - 16 hr.	-	-	-	-
WEST BOUND				
A.A.D.T.	82920	83170	91010	75910
R 12 / 24 - %	67	68.8	63.6	61.6
R 16 / 24 - %	85.1	86.5	81.8	81.2
AM Peak Hour	0900-1000	0700-0800	0900-1000	0900-1000
One-way flow at AM peak hour	4830	5610	5770	3890
T - % (AM)	-	-	-	-
PM Peak Hour	1700-1800	1700-1800	1700-1800	1600-1700
One-way flow at PM peak hour	4420	4400	4980	4270
T - % (PM)	-	-	-	-
Prop.of commercial vehicles - 16 hr.	-	-	-	-

3. OTHER INFORMATION AND COMMENT